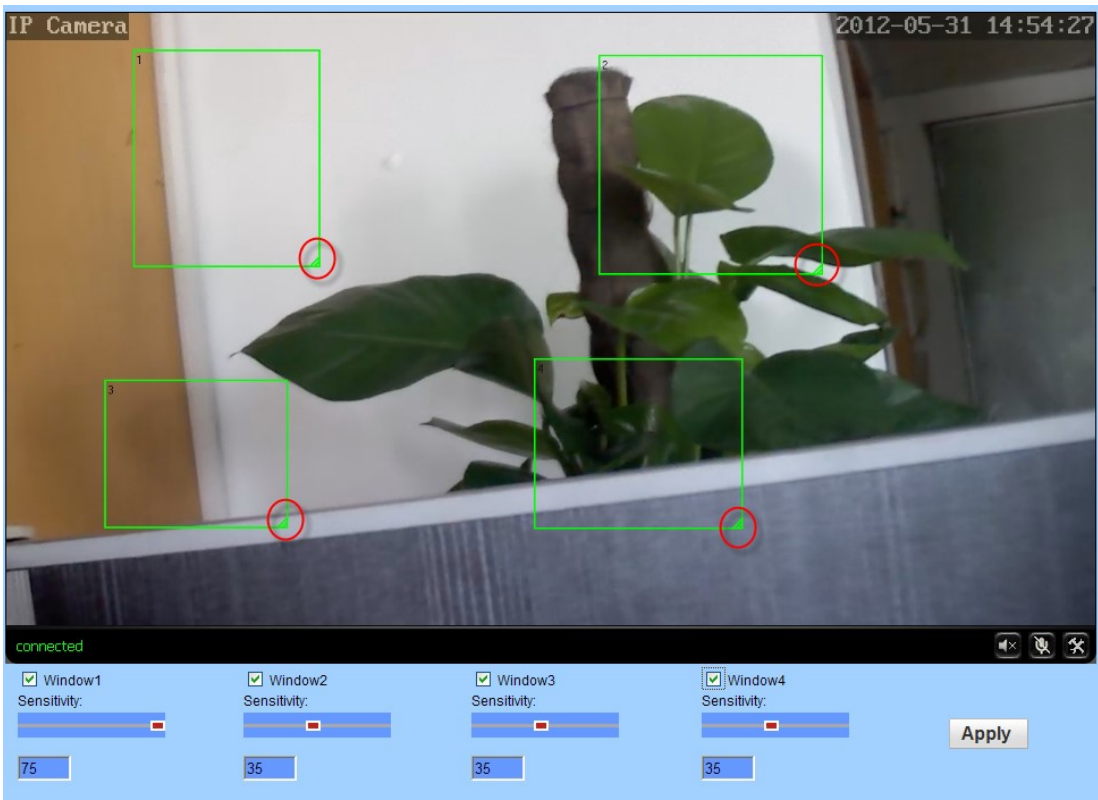


How to set alarm to send Email

1. Setting motion detection



If you want to monitor a zone fixed, when the zone has exception, it enables alarm, you can choose motion detection function. Settings like below. The equipment can support 4 zones setting, you can enable it through tick the option box at the bottom of page. When enable a zone, the zone box will display on the screen, and list zone number, moving mouse to this zone box, you can drag the box to any position; also can move mouse to red box at the bottom right corner, drag it to change the size. After setting, click apply, motion detection will take effect.

2. Setting alarm Linkage

When alarm triggered, the equipment will alarm with many ways, as shown in below picture:

- send alarm and pictures to email
- send captured pictures to assigned FTP server
- send video recording to assigned FTP server
- capture a picture, then save to TF Card
- Recording a video for 15 seconds, then save to TF card (including 1-3 seconds warning before video)
- linkage Preset: after the alarm, call preset
- alarm capture quantity, setting as required (1-3 pieces)

Linkage set

☐ E-mail Alarm and Send with Picture [Email Setting](#)

☐ Save Picture on the FTP Server [FTP Server Setting](#)

☐ Save Video on the FTP Server

☐ Save Picture on the SD Card

☐ Save Video on the SD card

☐ 1 ▼

Image capture

Image capture number: 1 ▼

Apply Cancel

If you want set Email alarm, please tick "E-mail Alarm and Send with Picture". and then click "Email setting"

3. Setting Email

Email Setting

SMTP server name: smtp.gmail.com Server Port: 465

Safe link: SSL ▼

Authentication: ☒ On ☐ Off

User name: ipcam

Password: •••••

Send To: recevier@gmail.com

Sender: sender@gmail.com

Subject: alarm

Message: alarm message (the max length is 127)

Test Email settings: Test Please set first, and then test.

Apply Cancel

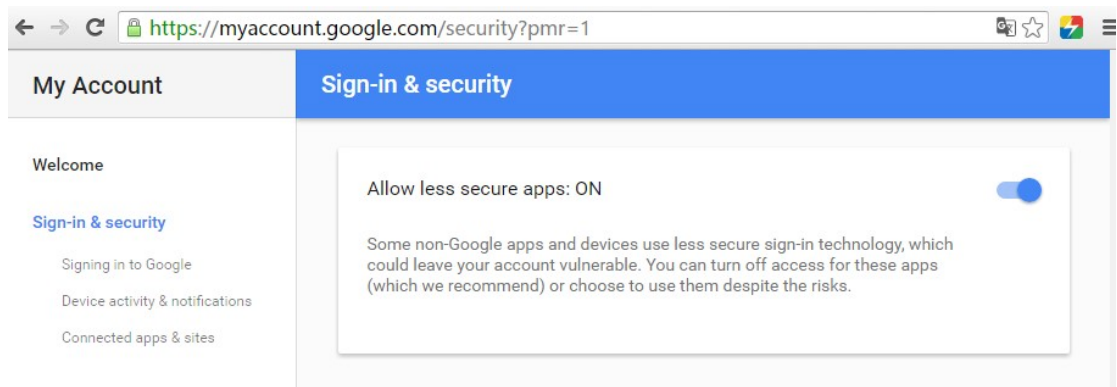
The items in above picture is mandatory fields need to fill in. If the filled content is not qualified, the setting will not be successful. After writing completed, click Apply firstly, then testing, it will reminder testing successfully when finished.

Note:

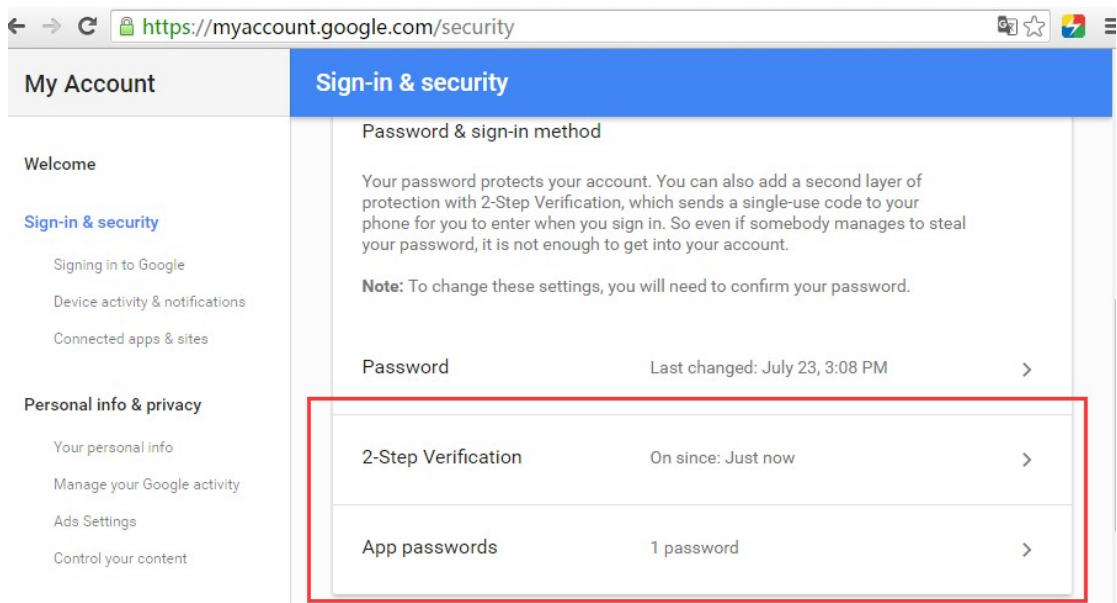
1. The server of sending email should support POP3 protocol. In order to strengthen security and reduce spam, Many mail server closed this protocol at present. So users need to check if the server support POP3 before choose mail server, otherwise the mail can not send successfully.

2. For some mail server using SSL certificate, it must enable SSL option, then can send email successfully.

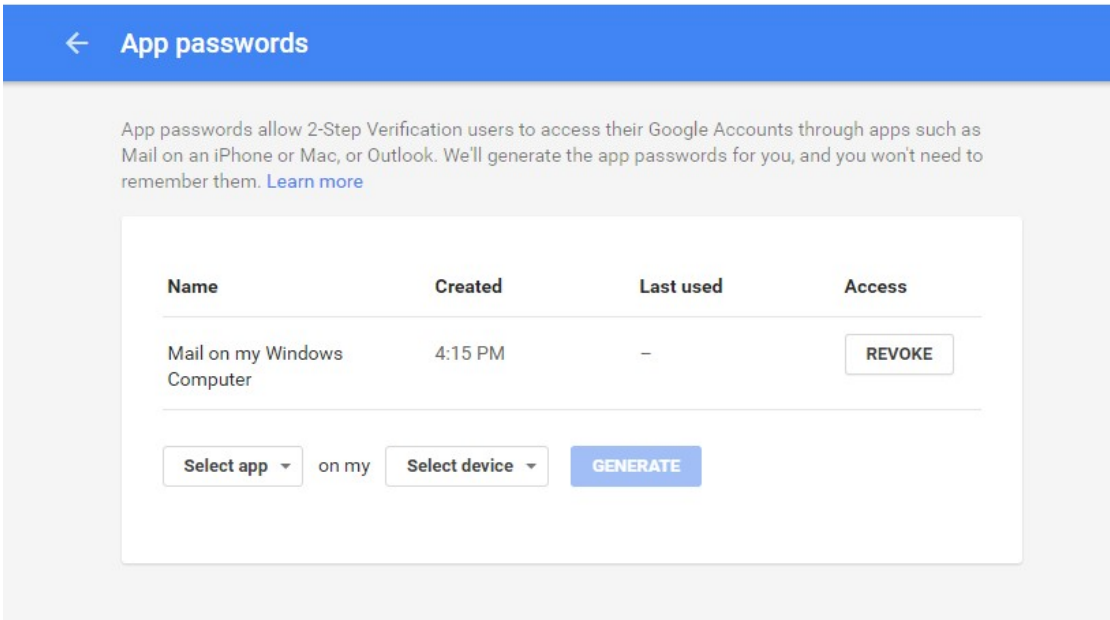
3. Some mailboxes require additional security settings, such as Gmail messages, you need to log in to your google account, open to allow less secure apps in "Sign-in & security" page.



If your Gmail mailbox opened "2-Step Verification", then you need to set up a separate "app passwords" for camera login,



How to set up "app password" you can click on the "Learn more" to get help



If you do not know the security settings of other mailboxes, we recommended use Gmail.

4. Setting alarm time



The equipment will trigger alarm only after detected alarm in protection period. So you need to select which time to set protection carefully.

Note: When setting time, please adjust system time firstly.